



# **HUAWEI E153 WIFI CONNECTION USER GUIDE**



**HUAWEI**

**HUAWEI TECHNOLOGIES CO., LTD.**

**AUGUST 2010**



## Table of Contents

1	Software Installation .....	3
2	Step by Step to Configure Software .....	3
3	Available WIFI networks; priority set-up .....	7



## 1 Software Installation

Plug in the USB Modem E153. The Mobile Partner will be shown in My Computer.

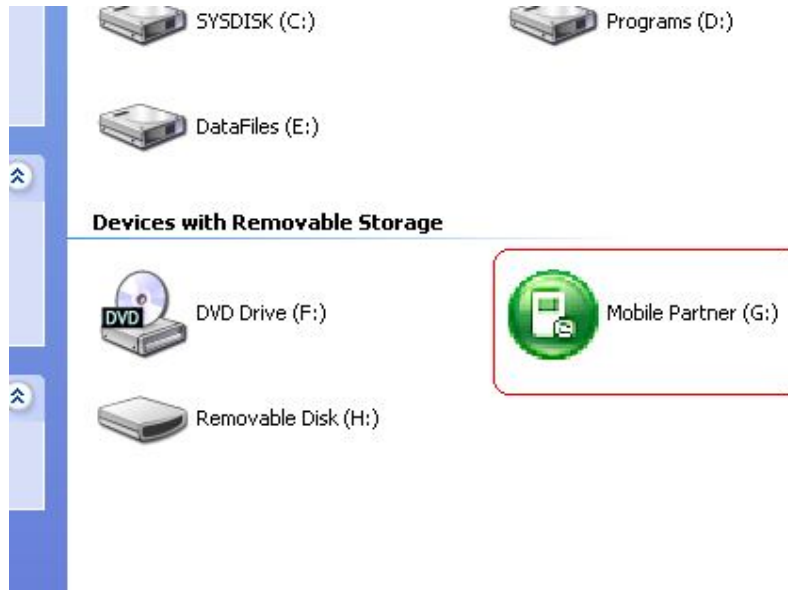


Figure 1 The Mobile Partner shown in My Computer

Double Click the ;**Mobile Partner**; to install the software. After Installation, the ;Mobile

Partner; shortcut icon  will be shown in desktop.

## 2 Step by Step to Configure Software

Step 1: Open the software. Double Click the ;Mobile Partner; shortcut icon. It will pop up the software as Figure 2.



## HUAWEI HUAWEI E153 WiFi Connection User Guide

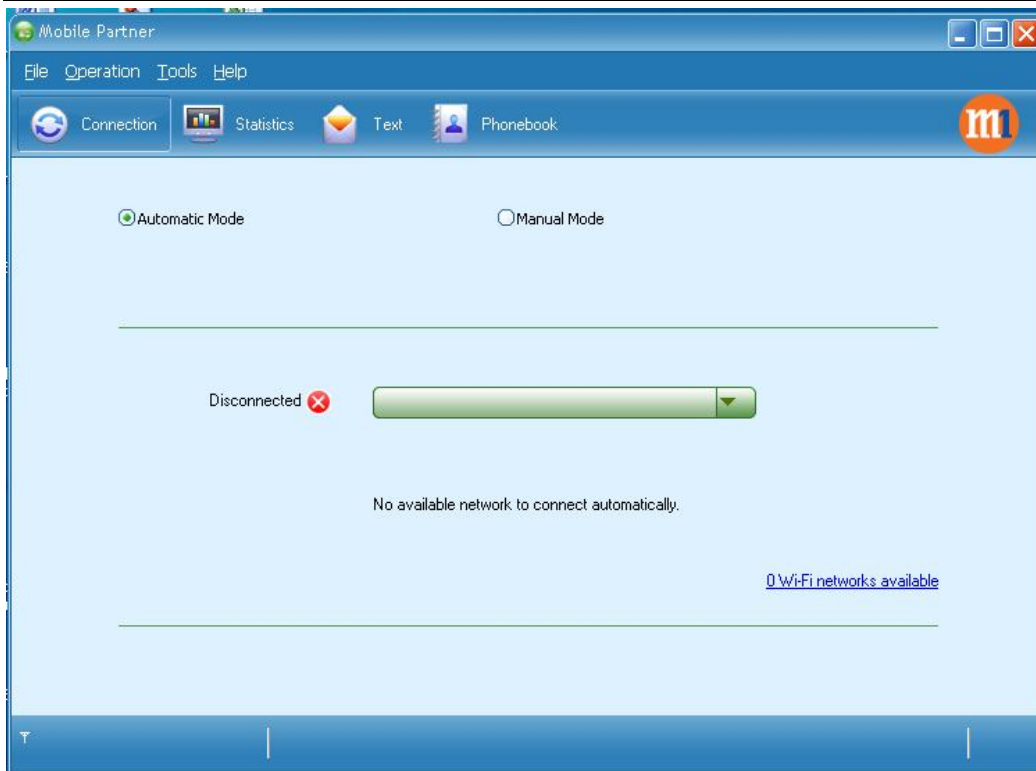


Figure 2 Software interface

Step 2: There are two modes: Automatic Mode and Manual Mode. In Automatic Mode, WIFI connection type is first priority. The second priority is 3G network. From the connection status, end-user can view the network which is being used. It's shown in Figure 3.

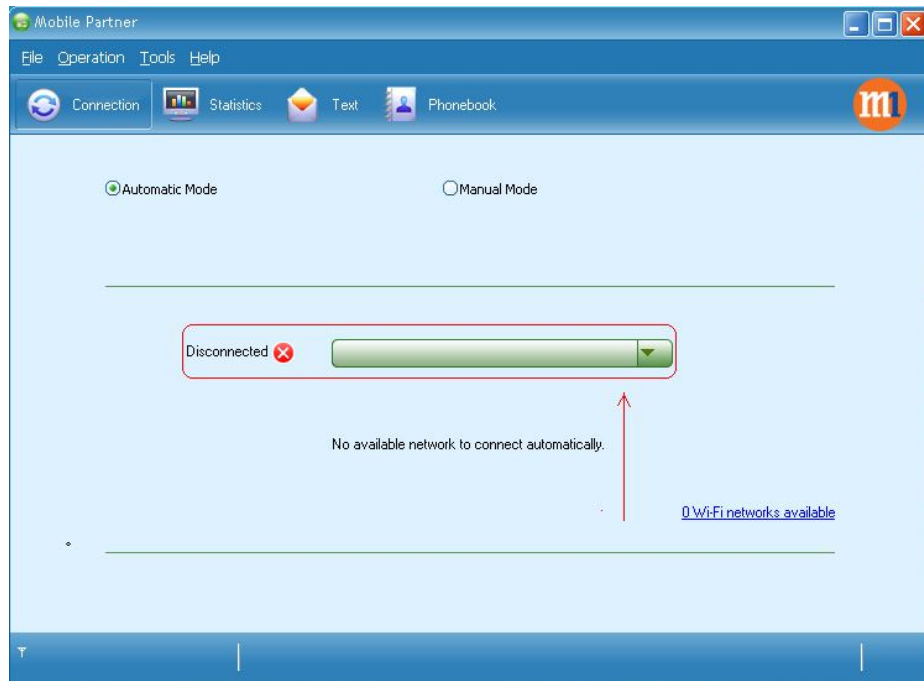


Figure 3 Connection status under Automatic Mode

Step 3: The available WIFI networks status are shown at right corner on the interface.



## HUAWEI HUAWEI E153 WiFi Connection User Guide

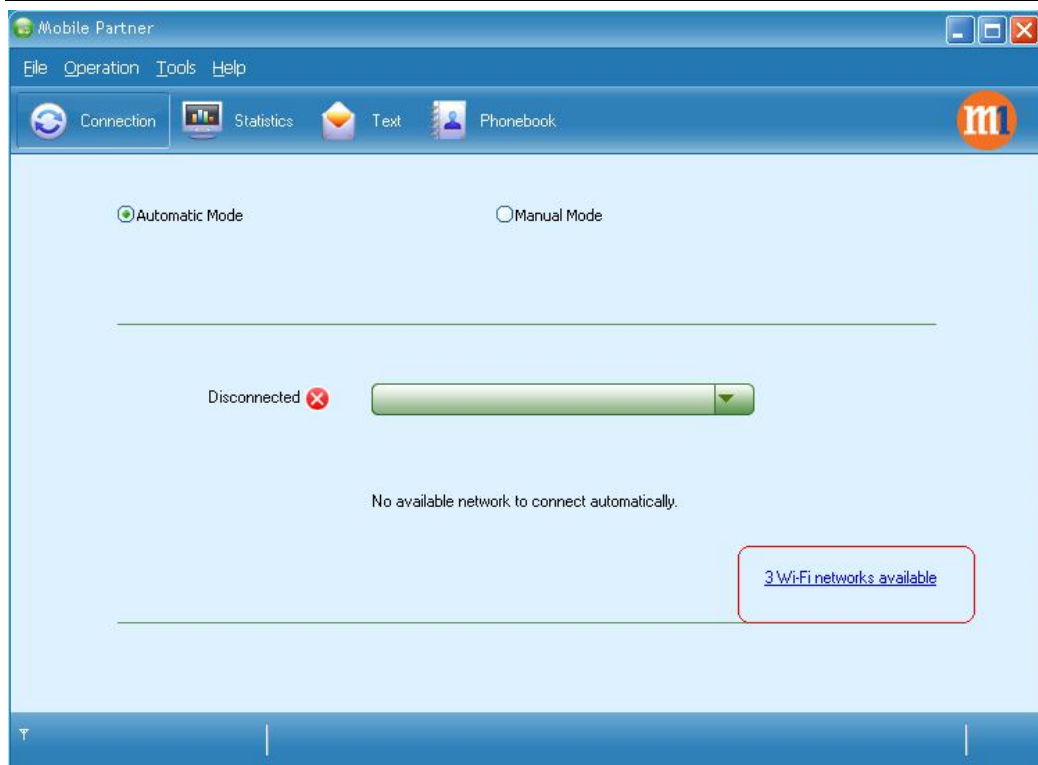


Figure 4 Available WIFI network

Step 4: The detailed WIFI information can be seen by click it.

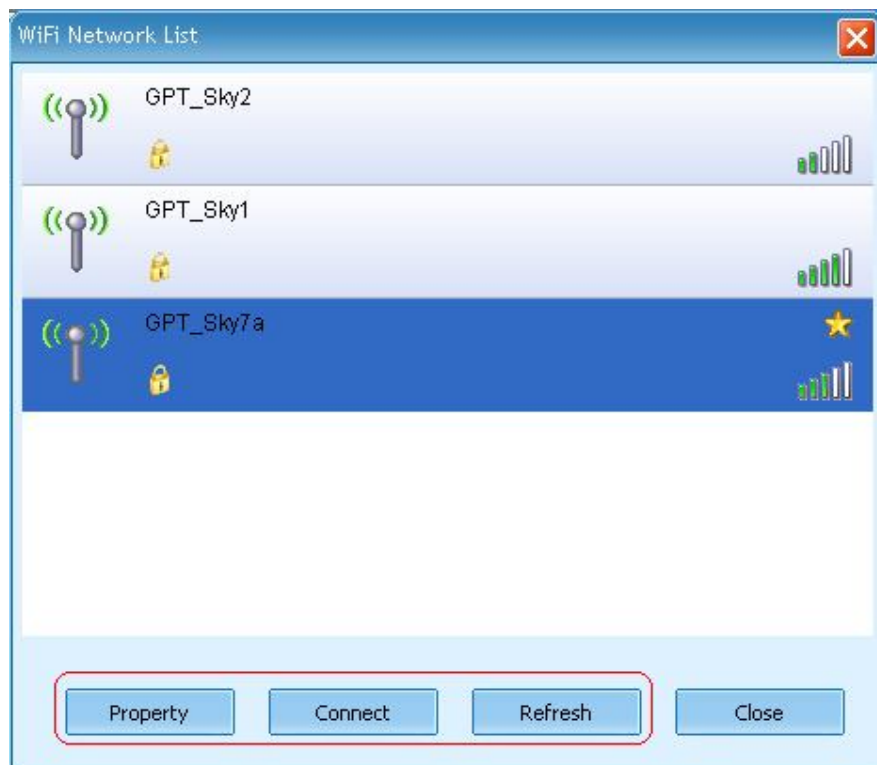


Figure 5 Detailed Information of the available WIFI

Step 5: The WIFI connection KEY can be configured by click ;Property; . It's shown in Figure 6.

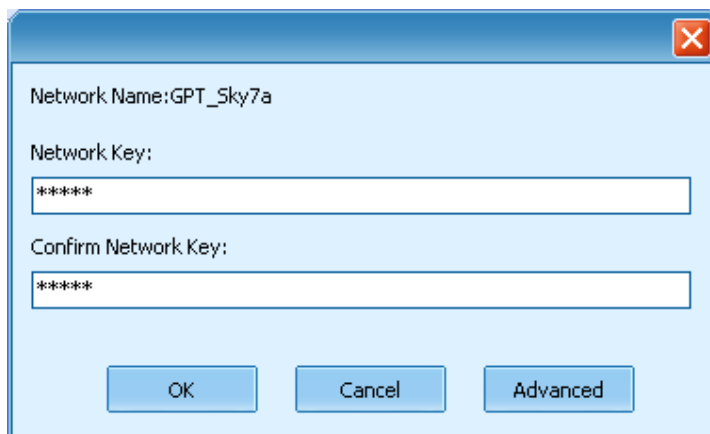


Figure 6 WIFI KEY configuration

And click ;Connect; to connect respective WIFI connection.

Step 6: Except Automatic Mode, end-user can use Manual Mode as well. In the Manual Mode, end-user can select 3G Network and available WIFI network. Manual Mode is shown in Figure 7.

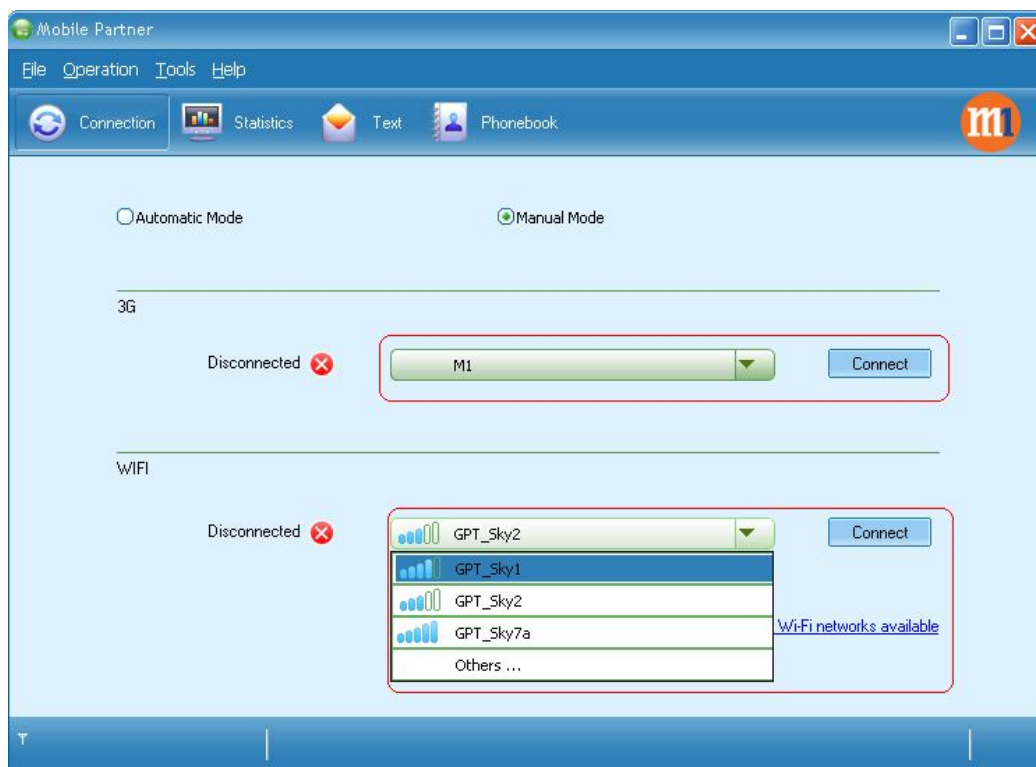


Figure 7 Manual Mode configuration



### 3 Available WIFI networks; priority set-up

When many WIFI networks are available and end-user has the KEY to access all these WIFI networks, end-user can set up the priority.

Go to ;Tools;, select ;Options;. As shown below:

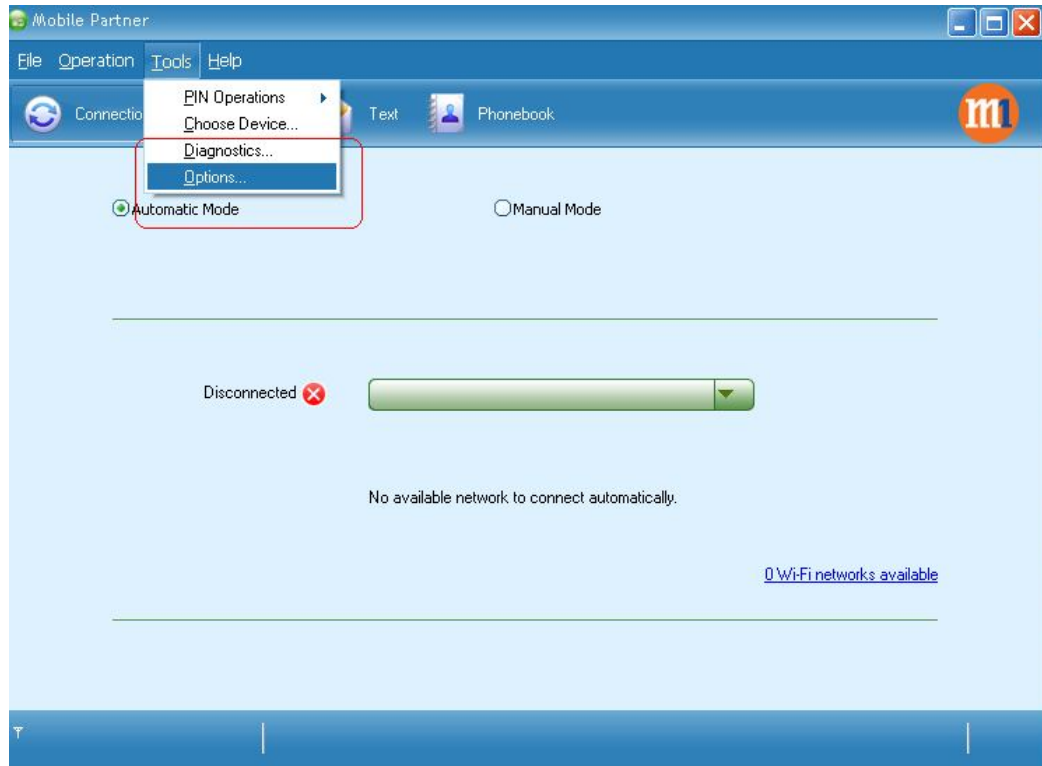


Figure 8 Options to Set up Priority

When click ;Options;, the set-up box will pop up. Select ;Priority; as shown below:

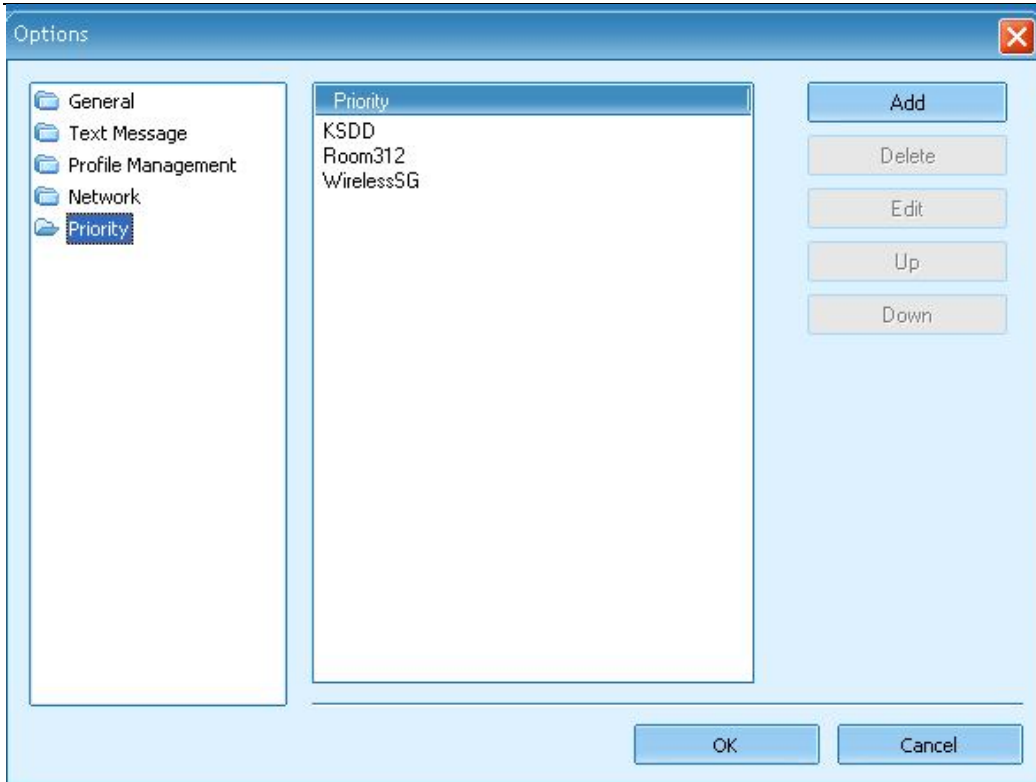


Figure 9 Priority Set-up

End user can ;Add; and ;Delete; WIFI profiles. Also, end-user can edit relative WIFI network profile by click ;Edit;. The end-user can set up the KEY by editing the profile as shown below:

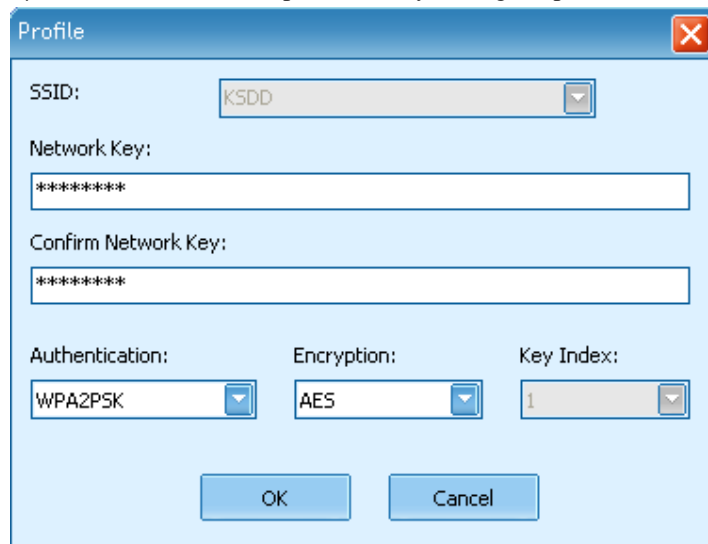


Figure 10 Editing WIFI Profile