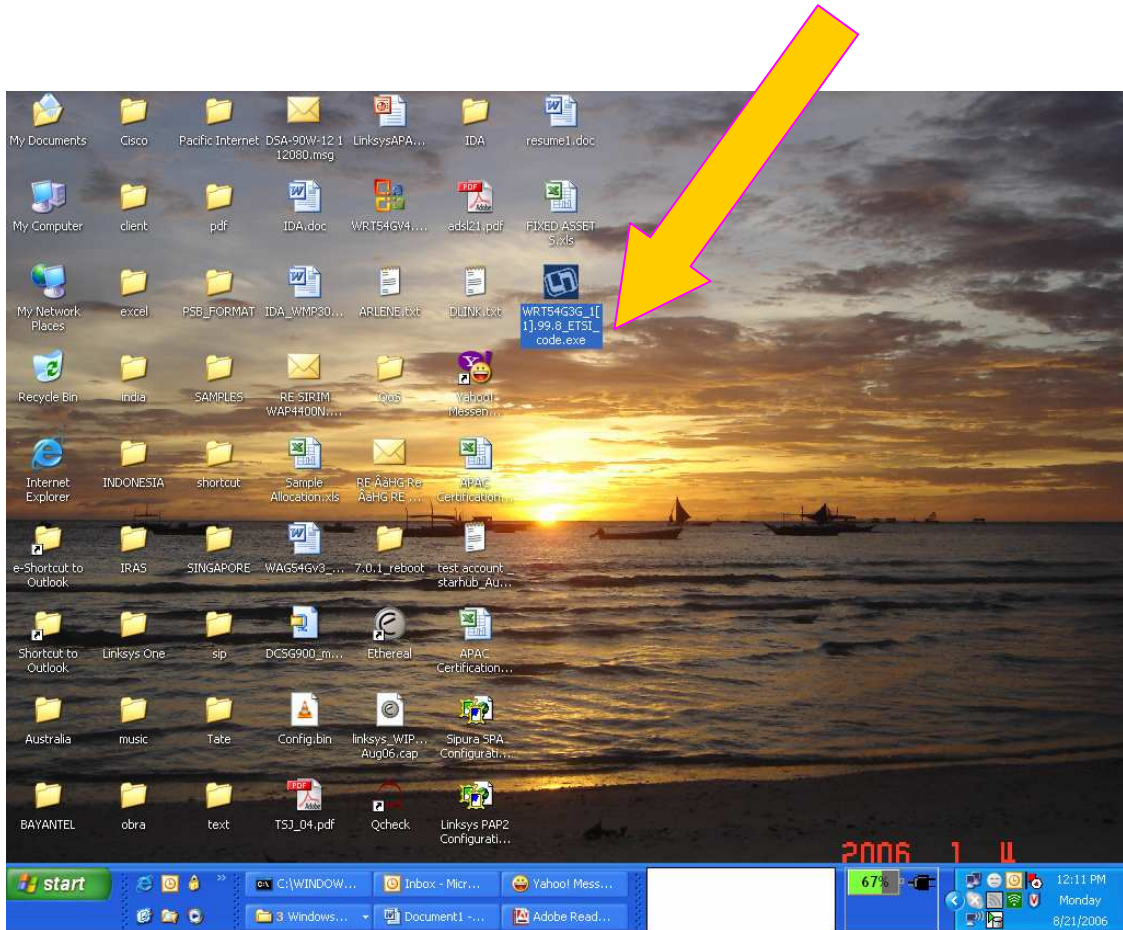
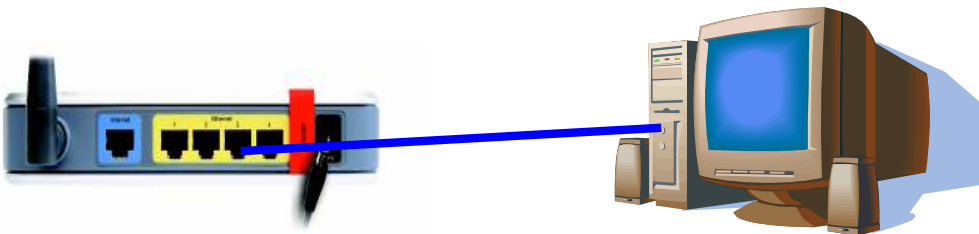


## Firmware Upgrade Procedure

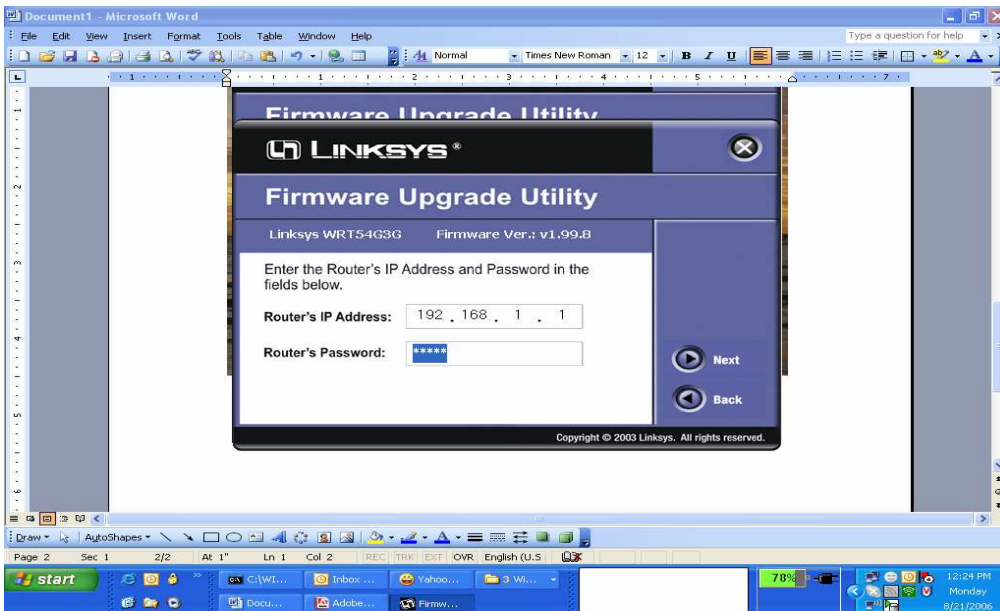
1. Save the firmware on your computer ( let say, on your desktop ).



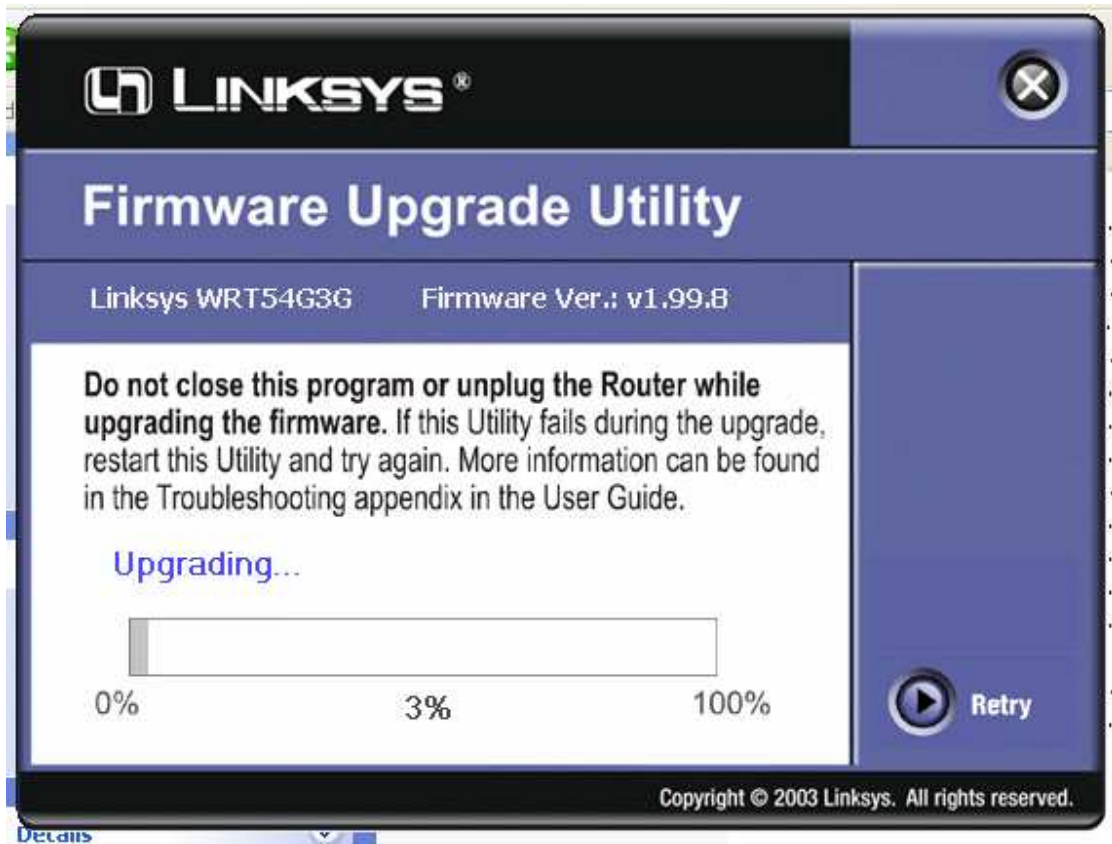
2. Then connect your computer to the local port ( e.g. port 1, 2,3 or 4 ) of the WRT54G3G.



3. Once it is connected, just run the WRT54G3G\_1[1].99.8\_ETSI\_code.exe firmware in order to proceed on the firmare upgrade.



Router's password is : *admin*



This *Congratulations* message will indicate that the firmware upgrade is completed.